
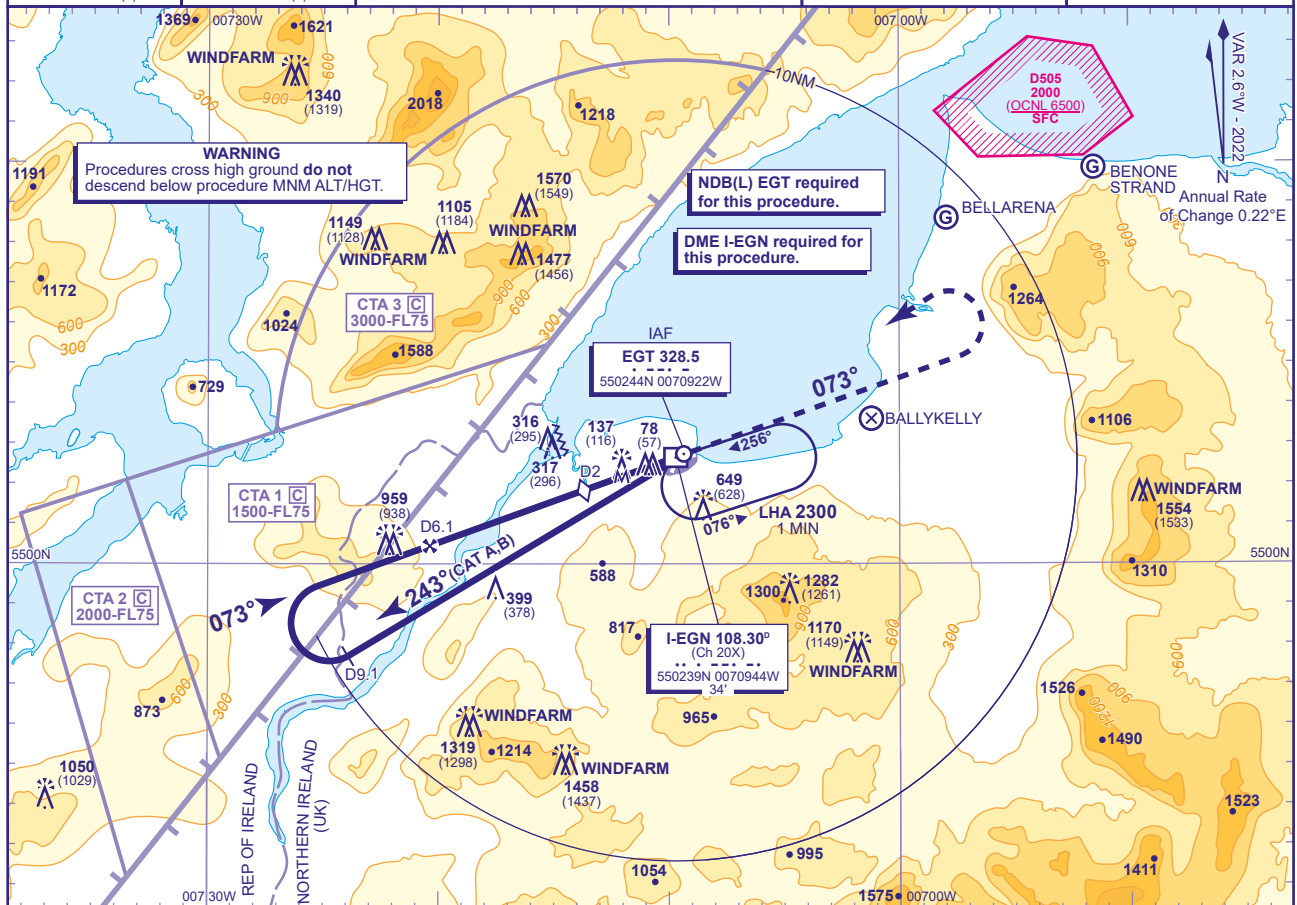
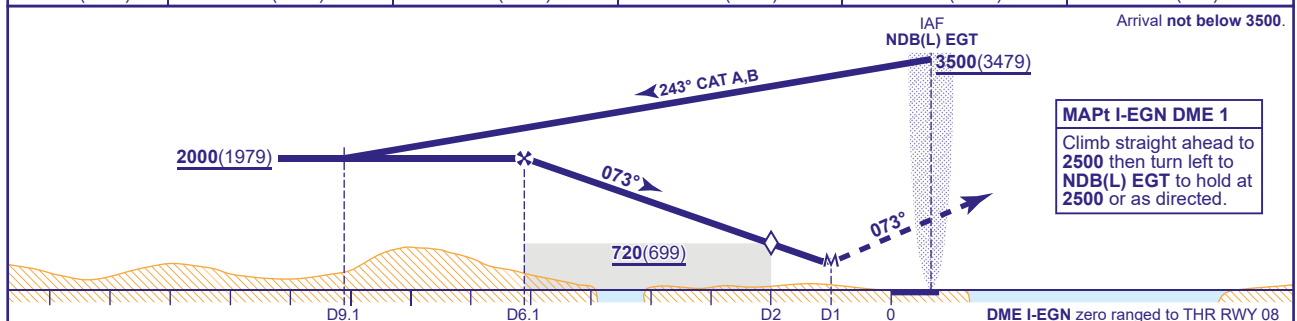
 <p>MSA 25NM NDB(L) EGT</p>	 <p>MSA 7NM NDB(L) EGT</p>	APP 123.625	EGLINTON APPROACH	AD ELEVATION 23	<p>LOC/DME Y (Offset LOC) RWY 08 (ACFT CAT A,B)</p>
		TWR 134.155	EGLINTON TOWER	THR ELEVATION 21	
		ATIS 119.380	EGLINTON INFORMATION	OBSTACLE ELEVATION 1570 AMSL (1549) (ABOVE THR)	
				BEARINGS ARE MAGNETIC	
					TRANSITION ALTITUDE 3000



RECOMMENDED PROFILE Gradient 5.24%, 318FT/NM

RECOMMENDED PROFILE Grades 0.24% to 0.70% TANM					
DME I-EGN	6	5	4	3	2 (SDF)
ALT(HGT)	1990(1669)	1670(1649)	1350(1329)	1040(1019)	720(699)



Aircraft Category		A	B	Rate of descent	G/S KT	160	140	120	100	80
OCA (OCH)	Procedure	440(419)	440(419)		FT/MIN	850	740	640	530	420
VM(C)OCA (OCH AAL)	Total Area	950(927)	950(927)							
	North of RWY 08/26	420(397)	520(497)							

NOTES

- 1 Lowest altitude to commence procedure from hold is **2500**.
- 2 FAT offset 2.7° from RWY 08 C/L.
- 3 DME not usable below **3500** between 140° and 185° due to terrain effects.
- 4 Aircraft are permitted to enter the Eglinton CTA areas whilst using these procedures and under the control of Eglinton ATC.

CHANGE (1/22): DME I-EGN DME ELEVATION.